

**WhereTrax™** - a modular software solution for RFID enabled real and last time asset tracking and management systems.

**WhereTrax Integrates with TraxWare Vertical Applications:**

- MasterTrax™ RFID Manufacturing & Industrial Process Control
- ControlBot™ Gate / Access Control, Just-in-Sequence WIP Integration
- PackTrax™ EPC Compliant Pack / Ship and Smart Label solutions

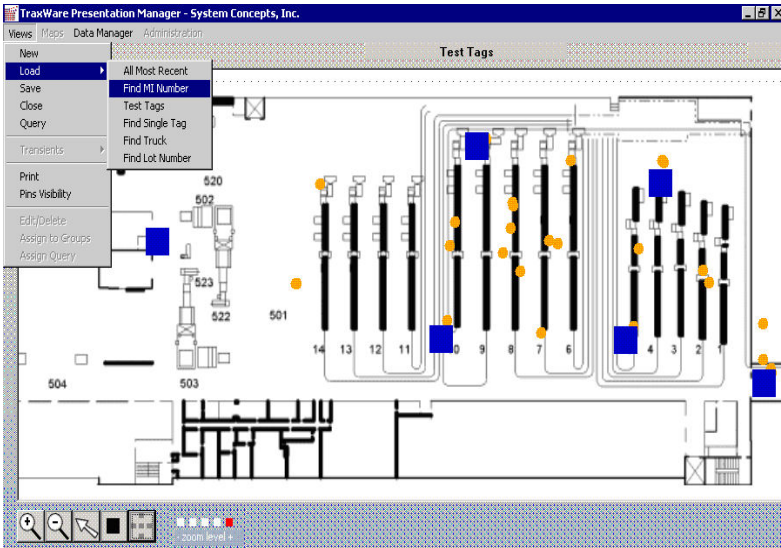
**WhereTrax Enables the following Solutions:**

- Deploy real time asset location solutions for high value assets
- Graphically display asset location, movement & utilization history on a real-time or last time basis.
- Quickly install active RFID deployments with easy to configure modules using Identec RFID hardware and RFID tags.
- Architected for seamless integration into existing Enterprise, Production Control and Database Systems.

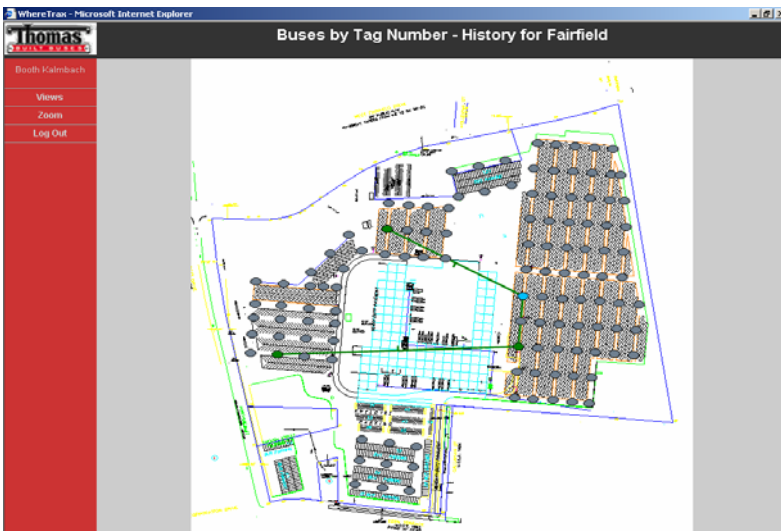
**Features Benefits**

|  |  |
|--|--|
| <b>Graphical Asset Tracking</b>          | Allows live high value asset or production flow tracking with customer provided maps.      |
| <b>Indoor and Outdoor Solutions</b>      | WhereBot Software for inside the 4 walls<br>RangeBot for the parking lot or Test range     |
| <b>RF Range Filter</b>                   | Automatically Monitors and Manages the dynamic "RF Soup" unique to every RFID installation |
| <b>Diagnostic Tools</b>                  | Reader and Tag Status monitoring and tracking  |
| <b>Filtering</b>                         | Edge and High level filtering to manage high RFID data levels                              |
| <b>Exception Manager</b>                 | Automated Anomaly and Exception Alert System   |
| <b>Modular Functionality and Pricing</b> | Enables flexible, value based RFID solutions   |

# WHERE TRAX



- RFID locations integrated with customer map
- Browser-based graphic interface
- Locations & Transients
- Real-time queries



## Technical Specifications

### ControlPoints:

#### Operating Systems

#### Data Protocol

#### Tag/Reader Interface

#### Enterprise Interface

Windows 2000, NT/XP/CE  
Web Services, XML,.NET,  
Web Services, XML,.NET,  
ODBC, Oracle, SQL Server,  
Access, MySQL SAP, SyBase

### EdgeBots

#### Operating System Skins

#### Data Protocol

#### Active Tag/Reader Interface

Windows 2000, NT/XP/CE  
Web Services, XML,.NET,  
Web Services, XML,.NET,

## System Concepts, Inc.

System Concepts, Inc. (SCI) is an Independent Software Vendor (ISV) for the RFID Industry. SCI's TraxWare Software Modules offer complete RFID enabled solutions for Manufacturing and Industrial Process Control, Real-Time Locator Services (RTLS), and EPC compliant solutions.

For more information:

[sales@sysconcepts.com](mailto:sales@sysconcepts.com)

Copyright © 2005 System Concepts.  
All rights reserved. v.1.1 (01/05) All names mentioned herein are trademarks of their respective companies.



4000 Piedmont Parkway, Suite 110  
High Point, NC 27265-9414  
(336) 454-7122 (voice)  
(336) 454-7125 (fax)  
(877) 822-0200 (toll-free)

[www.sysconcepts.com](http://www.sysconcepts.com)